

BR SERIES

AUTOMOTIVE RELAY SOCKETS

DESCRIPTION

5 Pin Automotive Relay Sockets

CONSTRUCTION

- Contacts** • Brass, Bright Tin Plated
- Molding** • Heat Stabilized Thermoplastic, 130° C Continuous use temperature rating

ORDERING CODE

PART NO.	DESCRIPTION	TERMINAL TYPE
BR04-PCB-O	4 Pin Automotive (Fig. 1)	PC Board
BR04-PCB-T	4 Pin Automotive (Fig. 2)	PC Board
BR05-PCB	5 Pin Automotive (Fig. 3)	PC Board
BR05-PCB-1P	5 Pin Automotive, Without Locator Pins (Fig. 3)	PC Board
BR05-SPCB	5 Pin Automotive (Fig. 3)	PC Board
BR05-SPCB-1P	5 Pin Automotive, Without Locator Pins (Fig. 3)	PC Board

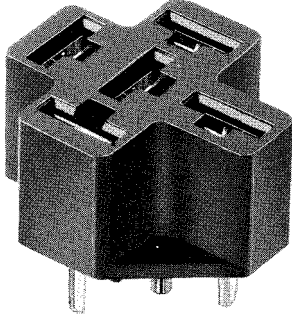


Fig. 1

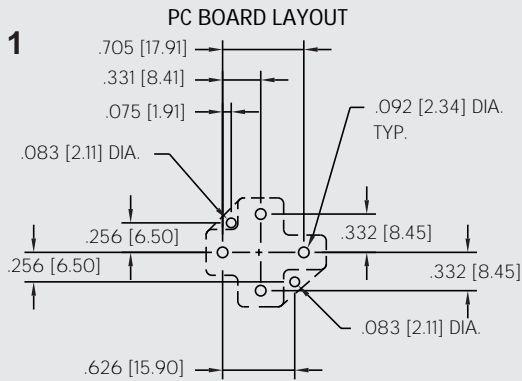


Fig. 2

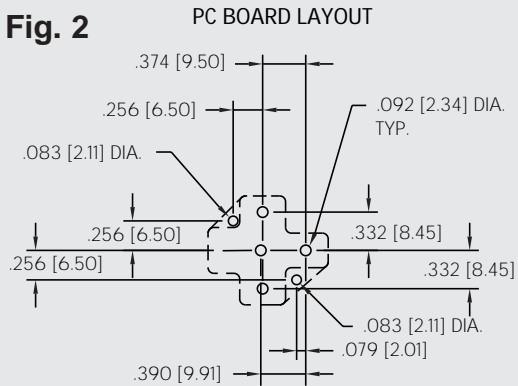
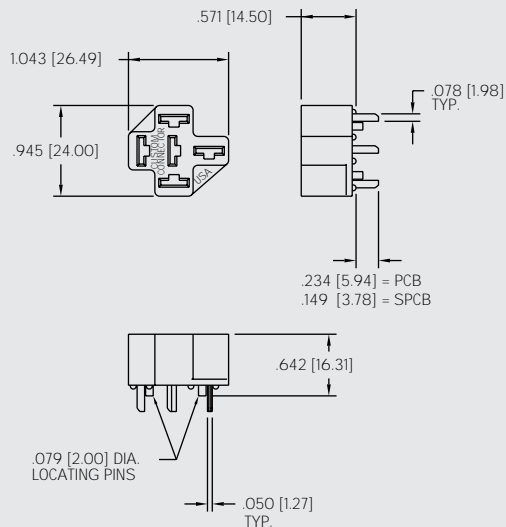
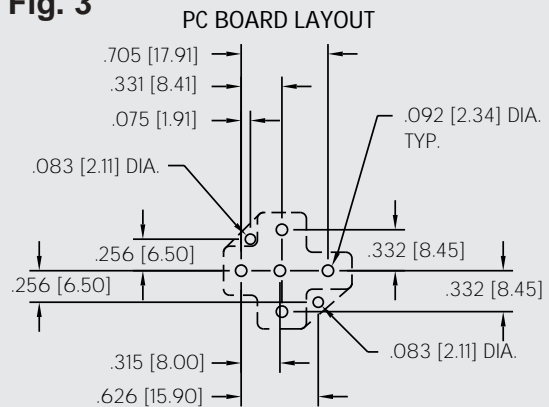


Fig. 3



BR SERIES

AUTOMOTIVE RELAY SOCKETS

DESCRIPTION

5 Pin Automotive Relay Sockets

CONSTRUCTION

- Contacts** • Brass, Bright Tin Plated
Molding • Heat Stabilized Thermoplastic,
 130° C Continuous use temperature rating

ORDERING CODE

PART NO.	DESCRIPTION	TERMINAL TYPE
BR05-FW	5 Pin Automotive Connector for Wire Harnessing (Fig. 1)	Crimp (see chart)
BR05-WH	5 Pin Automotive Connector for Wire Harnessing (Fig. 2)	Crimp (see chart)
BR05-WHF	5 Pin Automotive Relay or Flasher Connector for Wire Harnessing (Fig. 3)	Crimp (see chart)

TERMINAL COMPATIBILITY CHART

Custom Connector Corporation recommends the following terminals to be used in conjunction with our BR Series relay socket series. All Parts listed below need to be purchased separately.

ORDER FROM	PART NO.	AWG	BLADE
FCI Automotive	JW-1230-2	12-14	1/4"
FCI Automotive	JW-1630-2	16-18	1/4"
AMP	42100	14-18	1/4"
AMP	42281	14-18	1/4"
AMP	42904	12-16	1/4"
AMP	60249	12-16	1/4"

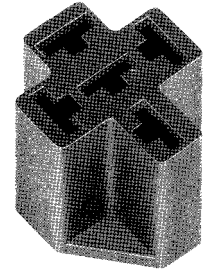
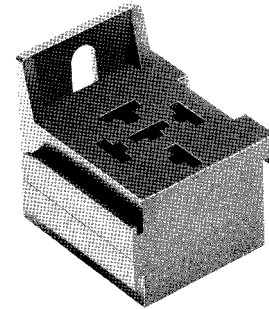


Fig. 1

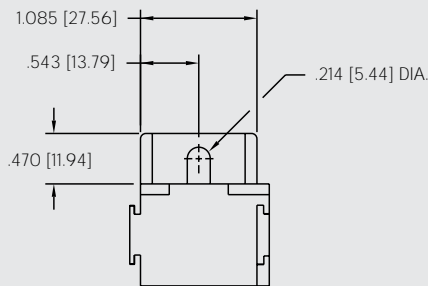
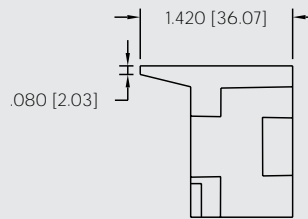
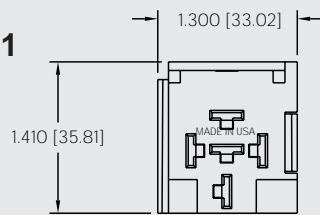


Fig. 2

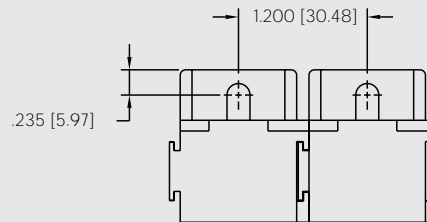
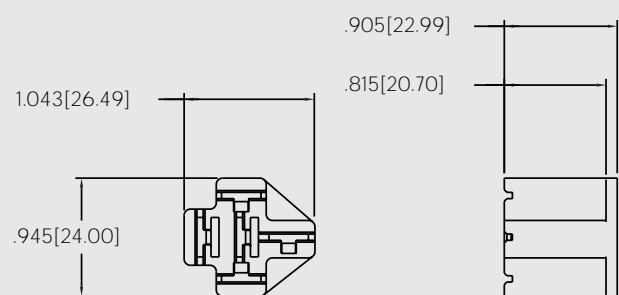
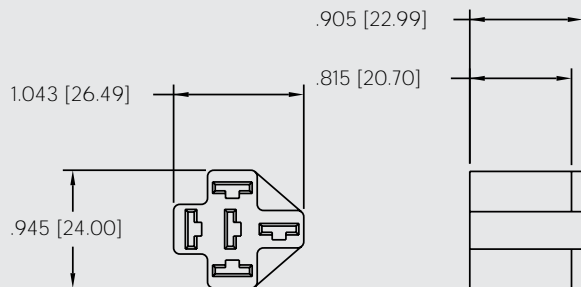


Fig. 3



BR