


Greenwich Electronics, Inc.

HD4 Series

- Inrush current to 80A
- PCB or PCB with quick-connect terminals
- SPST-NO 20A capacity
- High dielectric strength
- Small package size
- Approvals:  pending
- Applications: motor control, high inrush lighting, appliances, general purpose



COIL DATA

Nominal Voltage (DC)	Nominal Coil Current (mA) (± 10% at 20°C)	Coil Resistance (Ω) (± 10% at 20°C)
5	180	28
12	75	160
24	38	640
48	19	2560

Pick-up Voltage	≤70% nominal
Drop-out Voltage	≥10% nominal
Max. Coil Voltage	130% nominal
Coil Consumption	Approx. 0.9W

Contact

Configuration	A: 1 form A (SPST-NO)
Material	Silver (Ag) alloy
Rated Load	20A@250VAC, 1hp@120VAC, 2hp@240VAC Motor: inrush 80A (0.3 sec)
Max. Carry Current	20A
Max. Switching Voltage	250VAC
Max. Switching Current	20A
Max. Switching Power	5000VA

Greenwich Electronics, Inc.

CHARACTERISTICS

Contact Resistance	Max. 30mΩ (Measured at 1A 24VDC)
Operate Time	≤20ms
Release Time	≤10ms
Insulation Resistance	≥1000MΩ (@500VDC)
Dielectric Strength:	
• Between coil and contacts	4500VAC / 50Hz one minute
• Between open contacts	1000VAC / 50Hz one minute
Vibration Resistance	10-55Hz, 1.5mm, double amplitude
Shock Resistance	Min. 20g (functional)
Ambient Temperature	
• Operate	-20°C to +70°C
• Storage	-20°C to +125°C
Relative Humidity	40% - 85%
Life Expectancy:	
• Mechanical	2 x 10 ⁶
• Electrical	1 x 10 ⁵ Operations (at rated load)
Weight	Approx. 23 grams

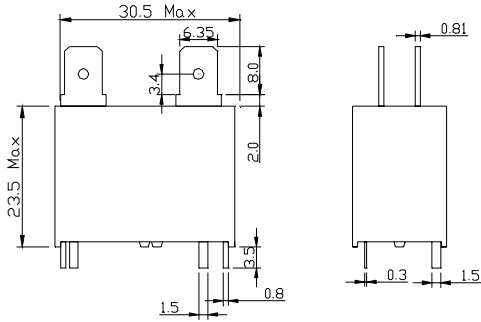
ORDERING INFORMATION

	<u>HD4</u>	-	<u>005</u>	-	<u>A</u>	<u>PC</u>
	I		II		III	IV
I.	Series				HD4	
II.	Coil Voltage (VDC)				012, 024	
III.	Contact configuration				A - 1 form A (SPST-NO)	
IV.	Mounting type				PC - PCB, PQ - PCB with quick connect terminals	

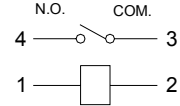
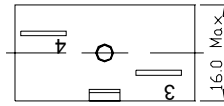
Greenwich Electronics, Inc.

HD4 Series Dimensions and Schematics (in mm)

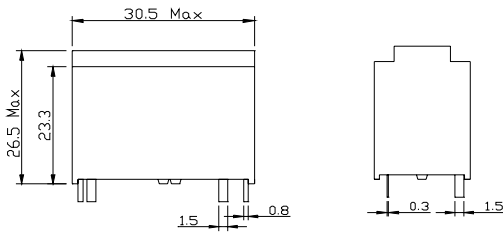
HD4 – PQ style



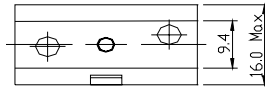
Terminal arrangement and wiring diagram



HD4 – PC style



Top view



Bottom view

