

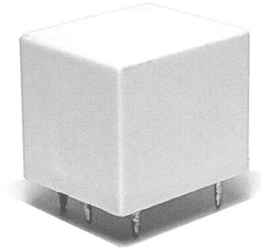


Greenwich Electronics, Inc.

GP1 Series

- Light to heavy duty (5-20A)
- High quality, low cost
- Industry standard footprint
- Approvals:  us (E197070)
 (R02128899/01)
- Applications: timers, heaters, industrial controls, appliances, general purpose



COIL DATA

Nominal Voltage (DC)	Nominal Coil Current (mA) (± 10% at 20°C)	Coil Resistance (Ω) (± 10% at 20°C)
3	120	25
5	70	70
6	60	100
9	40	220
12	30	400
24	15	1600
48	8	6400

Pick-up Voltage	≤75% nominal
Drop-out Voltage	≥10% nominal
Max. Coil Voltage	130% nominal
Coil Consumption	Approx. 0.36W

Contact

Configuration	A: 1 form A (SPST-NO), B: 1 form B (SPST-NC), C: 1 form C (SPDT)
Material	Silver (Ag) alloy
Rated Load	UL: 5: 5A@28VDC/125VAC 10: 10A@28VDC/125VAC 12: 12A@28VDC/ 125VAC -10A@250VAC - 6A@277VAC 15: 15A@28VDC/125VAC 20: 20A@16VDC/125VAC - 1/3hp@125/277VAC TUV: 12: 6A@28VDC/250VAC

Greenwich Electronics, Inc.

Max. Carry Current	5: 5 10: 10 12: 12 15: 15 20: 20
Max. Switching Voltage	110VDC / 380VAC
Max. Switching Current	20A
Max. Switching Power	420W, 2500VA

CHARACTERISTICS

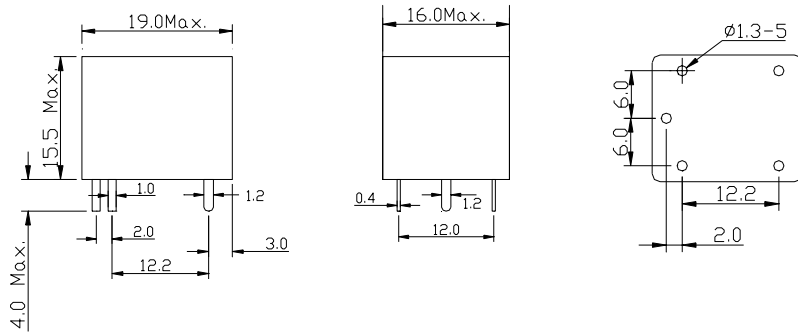
Contact Resistance	Max. 50mΩ
Operate Time	≤10ms
Release Time	≤5ms
Insulation Resistance	≥250MΩ (@500VDC)
Dielectric Strength:	
• Between coil and contacts	1500VAC - 50Hz / one minute
• Between open contacts	1000VAC - 50Hz / one minute
Vibration Resistance	10-50Hz, 1.5mm, double amplitude
Shock Resistance	10g
Ambient Temperature	
• Operate	-40°C to +85°C
• Storage	-40°C to +155°C
Relative Humidity	20% - 85%
Life Expectancy:	
• Mechanical	1 x 10 ⁷
• Electrical	1 x 10 ⁵ (at rated load)
Weight	Approx. 10 grams

ORDERING INFORMATION

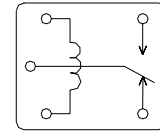
<u>GP1</u>	-	<u>048</u>	-	<u>C</u>	<u>12</u>	<u>S</u>	<u>F</u>
I		II		III	IV	V	VI
I.	Series			GP1			
II.	Coil Voltage (VDC)			003, 005, 006, 009, 012, 024, 048			
III.	Contact Configuration			A - 1 form A (SPST-NO), B - 1 form B (SPST-NC) C - 1 form C (SPDT)			
IV.	Contact Rating			5 - 5A, 10 - 10A, 12 - 12A, 15 - 15A, 20 - 20A			
V.	Package Type			D - dust cover, S - Sealed			
VI.	Temperature Class			nil - Class "B", F - Class "F"			

Greenwich Electronics, Inc.

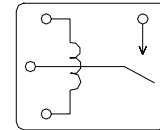
GP1 Series Dimensions and Schematics (in mm)



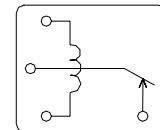
Terminal arrangement and wiring diagram



SPDT - 1 form C



SPST-NO - 1 form A



SPST-NC - 1 form B